

LIUGONG



**DEMOLITION
APPLICATION**

EXCAVATORS

TOUGH WORLD. TOUGH EQUIPMENT.

TOUGH WORLD. TOUGH EQUIPMENT.

You don't need to be told it's a tough world. It's your reality, you live it every day and you know how hard it can be on your people and your machines. It's getting tougher to make your business pay too, with rising costs, increasing legislation and greater competition. We understand and we've put that understanding into action with our demolition excavators.

NO TOUGH COMPROMISES, JUST EVERYTHING YOU NEED AND NOTHING YOU DON'T

The construction equipment industry has seen an expensive trend towards over-engineered products. Some manufacturers genuinely believe that adding cost, adds perceived value in customers' eyes.

BUT YOU TOLD US A DIFFERENT STORY

You asked for tough, well-engineered durable excavators, which just keep on working, cycle after cycle.

YOU WANTED HARD WORKING EXCAVATORS THAT DELIVER ON 3 ESSENTIAL NEEDS:

1



BUILT TO DEMOLISH

2



UPTIME AND SUPPORT

3



TOTAL COST OF OWNERSHIP



With the LiuGong demolition excavators, we've risen to your challenge and given you everything you want – tough, durable excavators – built without compromise.



TOUGH FACTS

AWARD WINNING DESIGN

Our UK-based design team has invested thousands of man hours to really understand how our machines are used every day. This insight shapes our innovative approach to product design. Our design team recently won a prestigious Red Dot Award for our D-Series Grader and all our products this award-winning design DNA.

TOUGH RESEARCH AND TESTING

Finding tougher, smarter, safer and more cost-effective ways of working matters to you. It matters to us too. Our new Global Research & Development Centre is a great example of this customer focused approach. We've established an international team of industry experts, backed up with the latest world-class technology, all focused on delivering greater value to you.

TOUGH QUALITY STANDARDS

When it comes to quality, we let our actions to speak for themselves.

We follow a rigorous Six Sigma methodology and consistently achieve ISO 9001 standards.

DEMOLITION APPLICATION EXCAVATORS



BUILT TO DEMOLISH

Demolition is the first step of progress with some tough and unforgiving work. No matter the task; moving, sorting, loading and processing debris, LiuGong excavators excel in the arena of demolishing. LiuGong E Series Excavators are built for maximum performance on all types of demolition sites with features that enhance efficiency, durability & safety.

FUELWISE CUMMINS ENGINE

All equipped with world-class Cummins engines, LiuGong excavators meet the strict EU Stage V emissions standards while also delivering heavy-duty power without compromising on fuel economy.

The field proven engines feature cooled-EGR system and the latest AdBlue technology, complemented by Cummins' patented VGTTM Turbocharger which precisely adjusts the airflow delivered to the engine, increasing performance and ensuring excellent fuel efficiency.

ADVANCED HYDRAULICS

Within the advanced hydraulic system of LiuGong excavators, negative flow of the hydraulics optimizes the main control valve and helps to maximize the cycle time of the cylinders. This leads to improved efficiency and a higher rate of work completed. The hydraulic system is highly proficient in transferring engine power to the ground while providing precise control.

INTELLIGENT POWER CONTROL

LiuGong's advanced Intelligent Power Control (IPC) system delivers the power you need, when you need it, ensuring powerful performance without fuel wastage. The new-generation computer-aided IPC system utilizes the mechanical, electrical and hydraulic systems of the LiuGong Excavators to work in perfect harmony for quality, precise control. When the working load increases, engine power and hydraulic pump flow respond to meet the exacting demands of the job.

WORK YOUR WAY

LiuGong's six selectable work modes give you full control of the machine and enhanced performance under various operating conditions:



Power



Economy



Fine



Lifting



Breaker



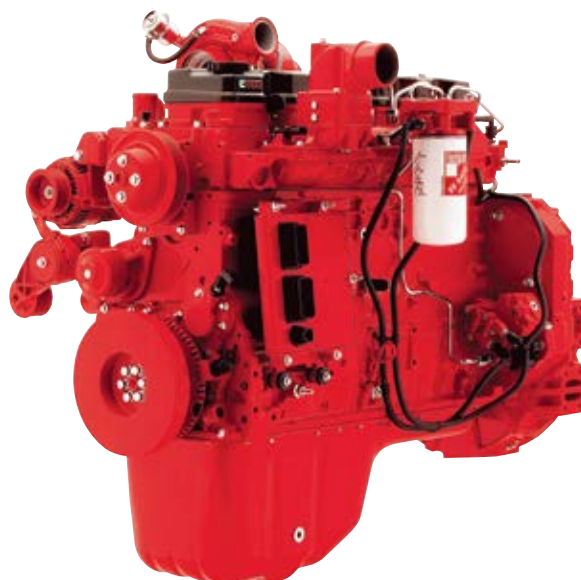
Attachment

ALWAYS EFFICIENT

Automatic warm-up system brings the engine up to operating temperature swiftly, enhancing fuel consumption, reducing emissions and maximizing uptime.

E series excavators further increase fuel economy by regulating its idle speed. If there is no hydraulic request signal detected from the joystick, even for just one

second, the engine speed is automatically dropped by 100 RPM. If no activity is detected over three seconds the engine speed will decrease to idle. As soon as the system detects the hydraulic signal once more, the engine will immediately return to the previous throttle speed setting.





STRUCTURED FOR DEMOLITION

The use of thick, high-tensile steel components, internal baffling and stress-relieved plates, make the structures on LiuGong E-series excavators strong and reliable.

We guarantee the quality and reliability of our machines throughout the manufacturing process by conducting rigorous tests and ultrasound inspections that identify defects well before they make it into production.

BOOM & ARM

Large cross-sectional supports incorporating one-piece steel castings are designed into the boom and arm structures. This solid engineering guarantees long-term durability and high resistance to torsional stresses. Standard rock-guard plates and vertical guards protect the arm in rocky digging conditions and tough work environments.

UPPER STRUCTURE

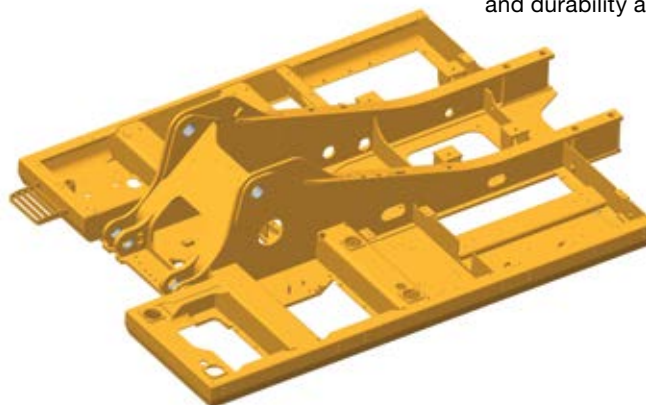
The upper structure is strongly reinforced by the use of an H-beam in the high cross section of the main structure providing even weight distribution and increased stability.

The platform's collision protection system has been welded into place to improve its strength, rigidity and overall service life.

The bolted on extra-heavy duty side protections on either side of the upper structure and heavy duty under covers that protect the upper structure for enhanced resistance to damage from debris help to withstand the extreme conditions of the demolition applications.

UNDERCARRIAGE

The high-strength undercarriage incorporates a welded X-frame construction for longevity and is designed to perform in the most challenging conditions. A long track beam and crawler system provides increased stability when using attachments for digging and truck loading. The result is superior strength and durability all around.



SAFETY BUILT IN

LiuGong's commitment to you includes an equal commitment to your safety. E-series excavators are equipped with all the necessary safety features to give you peace of mind and help you focus on the job at hand.

SAFETY STANDARDS

LiuGong excavators are certified to European CE standards and meet ISO safety standards.

ENHANCED VISIBILITY

The large glass surface area of the E-series cab, combined with the optional 360 degrees camera, provides an extraordinary view of the surroundings. This ensures the operator is always aware of the immediate environment, while adding LED work lights provides clearer vision on jobsites.

ROLL OVER PROTECTION SYSTEM

The cab's high-strength ROPS ensures operator protection in a worst-case scenario.

FALLING OBJECT PROTECTION SYSTEM

For the extreme environments of demolition sites, the Falling Object Protection (FOPS) is an invaluable addition to operator safety.

SAFE ENTRY

Safety rails and well-positioned anti-slip tape on the upper part of the machine make it easier and safer during machine servicing.





READY FOR PEAK PERFORMANCE

Demolition contract periods are now becoming shorter and shorter and legislation is more and more stringent. The E Series excavators are designed to get a lot of work done in a short amount of time. Featuring stronger boom, arm and bucket breakout forces, greater hydraulic flows, higher swing speeds and improved cycle times, these excavators will make light work of powering through the toughest demolition sites.

PROVEN PERFORMANCE

LiuGong makes it easy for even the most inexperienced of operators to be productive by harnessing the engine power across the six working modes of the excavator. Just select the mode that matches the work type and the job can be completed in quick time.

SMART HYDRAULICS

Load-sensing hydraulics direct the engine's power to ensure hydraulic pump flow continually adjusts for smooth, quick and efficient operation. It's where intelligence meets brute force. Engine power and hydraulic pump flow are automatically reset to adjust for the load attachment, helping to optimize the productivity of the machine.

RUGGED MACHINE DESIGN

Tough and reliable frame provides increased strength, reduced wear, and improved transmission of power to the ground.

ALWAYS VERSATILE

LiuGong's quick coupler and PowerLatch tilt coupler maximize your uptime by making changeover of attachments like buckets, breakers and shears, quick and simple.

TAKE CONTROL

Ergonomically designed controls, clear and informative displays, enhanced visibility, and outstanding comfort increases operator efficiency and safety. Add to that the easily accessed service points for critical daily servicing and routine maintenance and this machine is sure to be well looked after.





HARD WORK MADE EASY

Demolition application is one of the most exhaustive operations. We understand how operators like to work and have designed the cab to ensure maximum operator comfort, enhanced productivity and excellent visibility all-round.



AT HOME IN THE CAB

Large and spacious cab has all the key features to make excavator operation as safe and comfortable as possible while boosting operator efficiency shift after shift.

The E-series cab is designed to reduce noise and vibration, putting operators comfort first. Convenient additions include cup holders, an AM/FM radio and MP3 player, refrigerated storage and personal luggage compartment. The cab is also fitted with a roof skylight that can be opened or closed as the operator chooses.

ADVANCED CLIMATE CONTROL

An advanced climate control system creates the right environment in any weather, all year round, while dust is eliminated thanks to the complete sealing of the pressurized cab.

COMMAND & CONTROL

LiuGong has carefully designed the cab controls to be perfectly positioned, right where you need them. All hand and foot controls are precisely placed to allow for ease of access and operation. In addition, the multi-adjustable, air-suspension seat has an option for electric heating.



LARGE LCD MONITOR

The easy-to-read, full-color LCD monitor displays all the critical information you need about the machine, including working mode, hydraulic oil temperature, hydraulic pressure and service intervals.

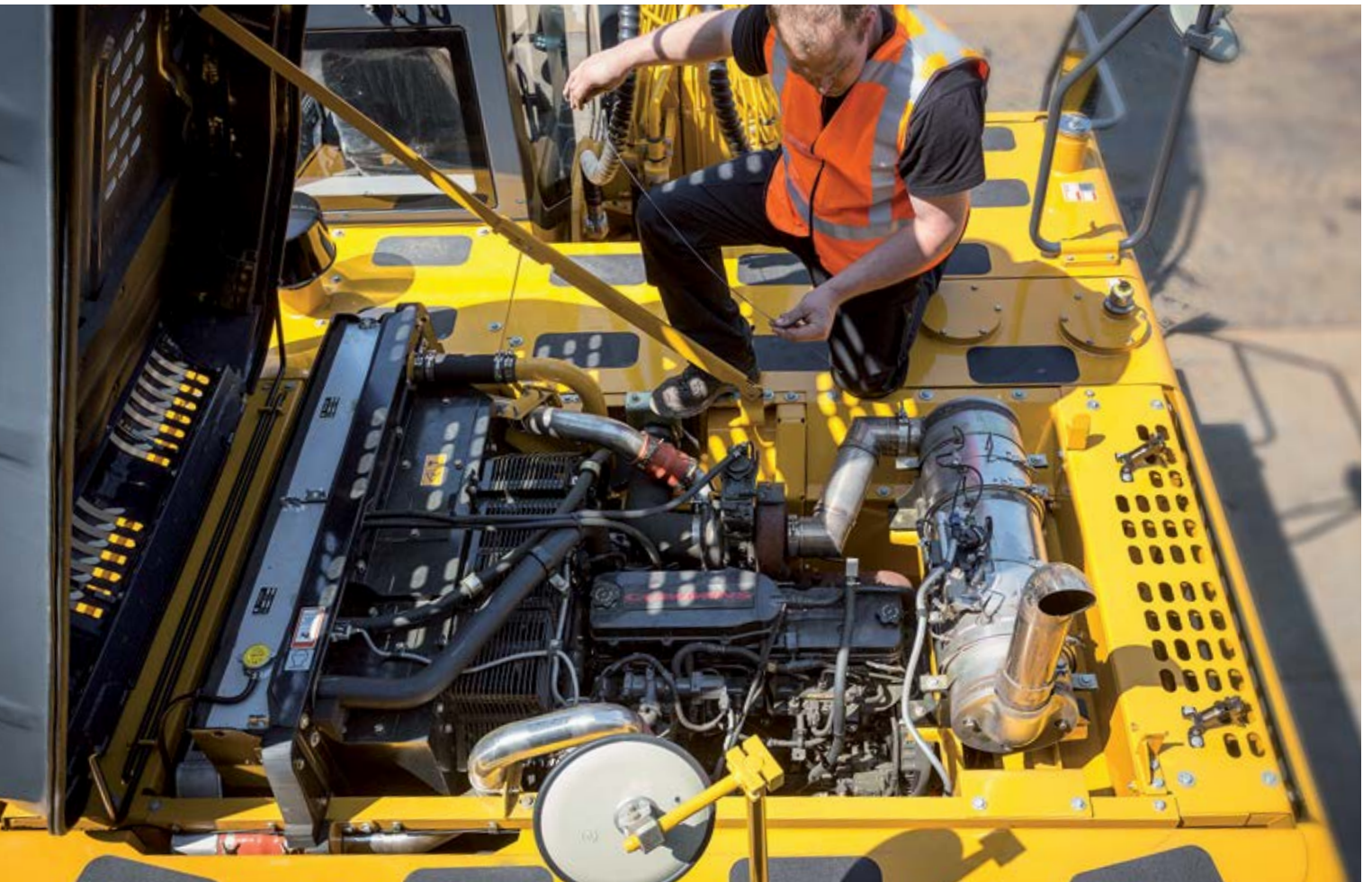
ALL ROUND VISIBILITY

The cab features a large glass surface for exceptional jobsite visibility. With the addition of an optional 360 degree camera, the operator can safely see all around the machine.



EASY SERVICE COMES STANDARD

LiuGong excavators have been specifically designed for easy service and maintenance in even the most remote and harsh environments.



MAXIMIZE YOUR UPTIME

If servicing is easy, it gets done. An automatic greasing system makes daily maintenance simple and quick, helping to lower maintenance costs and improve machine productivity. The automatic system improves bearing life and reduces repairs by delivering regular and precise amounts of grease to each bearing. Optimal design and layout of all other maintenance features makes it easy for the operator to complete essential servicing tasks.

14

EASILY ACCESSIBLE SERVICE POINTS MAKE DAILY CHECKS FAST AND EFFECTIVE:

- Easily visible hydraulic oil level gauge
- Accessible, grouped filters
- Easy to replace A/C filter next to the cab door
- Maintenance free air filter

ON BOARD MONITORING

Using the LCD display, the operator can easily check oil temperatures and pressure levels, receive service interval alerts and access other information that contributes to simple maintenance and servicing of the machine.

PART OF YOUR PERFORMANCE



We know that confidence in your machine and those who support it is essential. So at LiuGong, we make sure we can always get what you need without delay, via our nine global parts depots, and the support of our network of local dealers across 100 countries worldwide.

LiuGong engineering sets high standards and all parts are rigorously tested to ensure they can meet the rigid quality specifications required for long lasting performance. No matter where you are in the world, we can ensure fast and efficient parts support to keep you going.

READY FOR ANY JOB

To ensure increased versatility on any jobsite, LiuGong provides a range of purpose designed attachments, hitches and tools for your excavator. In-cab dial-in hydraulic flow settings through the display screen optimizes the performance of your attachment.



BUCKETS



QUICK COUPLER



TILT COUPLER



BREAKER



SHEAR



JOBSITE UPTIME AND SUPPORT

LiuGong demolition excavators are built for maximum performance and durability on all types of demolition sites, but it's uptime and support and total cost of ownership which will keep you coming back to buy more. Having confidence in the machine's back up and support network is a vital part of the purchasing decision. How do we measure up?

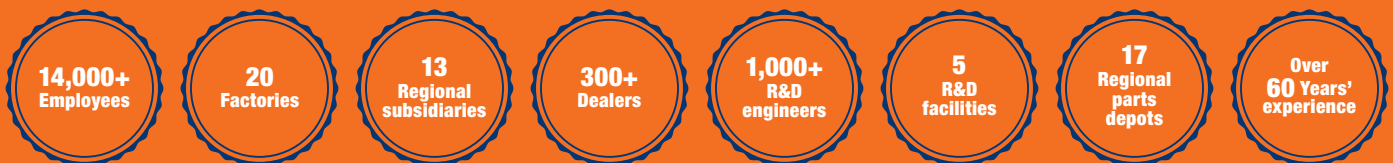
FAST RESPONDING GLOBAL NETWORK

We have an extensive dealer network of over 300 dealers in more than 100 countries.

All supported by 13 regional subsidiaries and 17 regional parts depots offering expert training, parts and service support.



WE ARE LIUGONG. WORKING HARD TO KEEP OUR GLOBAL CUSTOMERS EARNING



WHERE YOU NEED US WHEN YOU NEED US

Reliability is built into our machines but all machines have some planned downtime. Our aim is to reduce even planned down time to the minimum by getting it right.

Technician training and parts availability are also high on our agenda, as is keeping you

informed on service and maintenance work and providing clear and accurate estimates, invoices and communication.

These may be small things, but customer feedback tells us that these basics really matter – so we aim to get them right.

MAINTENANCE AND SUPPORT PACKAGES

From genuine LiuGong parts, to full repair and maintenance contracts, LiuGong has the flexibility to offer the level of support and response to suit your business and applications. Whatever level of support you choose you can be confident that it is backed up by LiuGong's service promise.



**Right parts.
Right price.
Right service.**

**Above all,
we get it right
the first time.**

1st



LIUGONG SERVICE PROMISE



Highly trained technicians utilizing the latest diagnostic equipment



15,000+ Genuine LiuGong parts available within 24hrs from our European Parts Distribution Center



Multi-lingual service helpline and online support



Transparent estimates and invoicing



Clear communications through electronic parts catalogue

SPECIFICATIONS

Operating weight 33,900 kg (74,737 lbs)

Operating weight includes coolant, lubricants, full fuel tank, cab, standard shoes, boom, arm, bucket and operator 75 kg (165 lbs).

Bucket capacity 1.4 m³ (1.83 yd³)

ENGINE

Description

Cummins EU Stage V, 6-cylinder straight Variable-Geometry Turbocharger (VGT), high pressure common rail, electronically controlled direct injection. Air cleaner: Cummins direct flow air filter. Cooling system: Air-to-air intercooler.

Emission rating EU Stage V

Engine manufacturer Cummins

Engine model B6.7

Aspiration Variable-Geometry Turbocharger (VGT)

Charged air cooling After cooler

Cooling fan drive Viscous clutch

Displacement 6.7 L (1.8 gal)
6,700 cm³ (409 in³)

Rated speed 2,200 rpm

Engine output - net 161 kW (216 hp/219 ps)
(SAE J1349 / ISO 9249)

Engine output - gross 179 kW (240 hp/243 ps)
(SAE J1995 / ISO 14396)

Maximum torque 949 N·m (700 lbf·ft)
@1,500 rpm

Bore × Stroke 107 × 124 mm
(4.2" × 4.9")

UNDERCARRIAGE

Track shoe each side 48

Link pitch 216 mm (8.5")

Shoe width, triple grouser 700 mm (23.6")

Bottom rollers each side 9

Top rollers each side 2

SWING SYSTEM

Description

Planetary gear reduction driven by high torque axial piston motor, with oil disk brake. Swing parking brake resets within five seconds after swing pilot controls return to neutral.

Swing speed 10.3 rpm

Swing torque 105,000 N·m (77,444 lbf·ft)

HYDRAULIC SYSTEM

Main pump

Type Two variable displacement piston pumps

Maximum flow 2 x 266 L/min
(2 x 70 gal/min)

Pilot pump

Type Gear pump

Maximum flow 19 L/min (5 gal/min)

Relief valve setting

Implement 34.3/37.3 MPa
(4,975 / 5,410 psi)

Travel circuit 34.3 MPa (4,975 psi)

Slew circuit 26.2 MPa (3,800 psi)

Pilot circuit 3.9 MPa (566 psi)

Hydraulic cylinders

Boom Cylinder – Bore × Stroke Φ 140 × 1,342 mm
(Φ 5.5" × 4'5")

Stick Cylinder – Bore × Stroke Φ 150 × 1,755 mm
(Φ 5.9" × 5'9")

Bucket Cylinder – Bore × Stroke Φ 140 × 1,135 mm
(Φ 5.5" × 3'9")

ELECTRIC SYSTEM

System Voltage 24 V

Batteries 2 x 12 V

Alternator 24 V - 70 A

Start motor 24 V - 7.8 kW
(24 V - 10.5 hp)

SERVICE CAPACITIES

Fuel tank 520 L (137.4 gal)

Engine oil 23L (6.1 gal)

Final drive (each) 9.5 L (2.5 gal)

Swing drive 10.5 L (2.8 gal)

Cooling system 35 L (9.2 gal)

Hydraulic reservoir 195 L (51.5 gal)

Hydraulic system total 360 L (95.1 gal)

DEF tank 35 L (9.2 gal)

SOUND PERFORMANCE

Interior Sound Power Level (ISO 6396) 72 dB(A)

Exterior Sound Power Level (ISO 6395) 104 dB(A)

DRIVE AND BRAKES

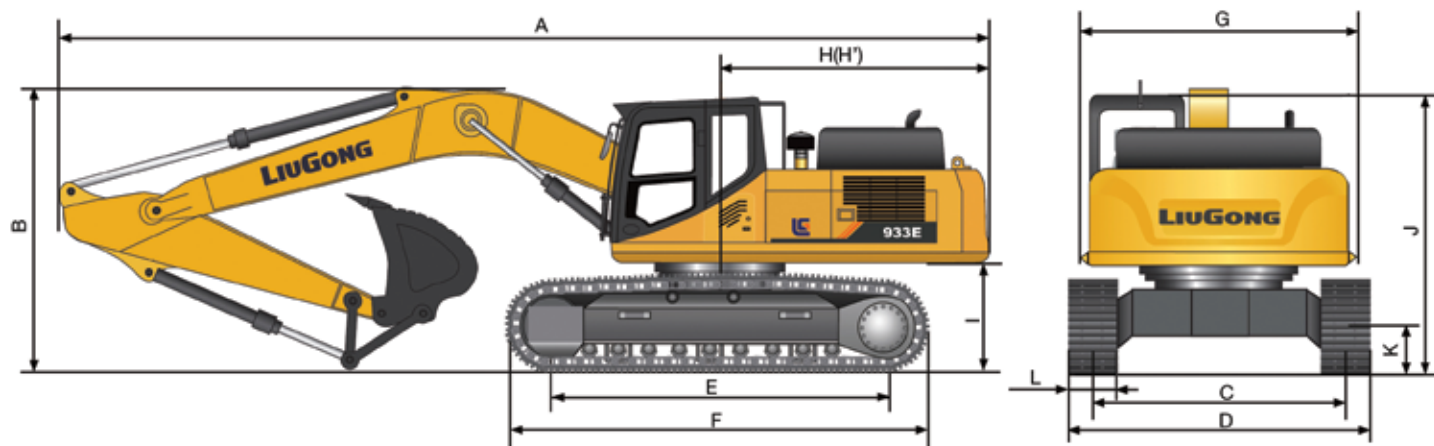
Description

2-speed axial piston motors with oil disk brakes. Steering controlled by two hand levers with pedals.

Max. travel speed High: 5.5 km/h (3.4 mph)
Low: 3.0 km/h (1.9 mph)

Gradeability 35°

Max. drawbar pull 300 kN (67,442 lbf)



DIMENSIONS

Boom	6,200 mm (20'4")
Arm Options	3,050 mm (10')
A Shipping Length	10,650 mm (34'11")
B Shipping Height – Top of Boom	3,525 mm (11'7")
C Track Gauge	2,590 mm (8'6")
D Undercarriage Width – with 700 mm (23.6")Shoes	3,290 mm (10'10")
E Length to Center of Rollers	4,050 mm (13'3")
F Track Length	4,980 mm (16'4")
G Overall Width of Upper Structure (including protective side beam)	3,077 mm (10'1")
H Tail Swing Radius	3,200 mm (10'6")
I Counterweight Ground Clearance	1,215 mm (4')
J Overall Height of Cab (with protective equipment)	3,325 mm (10'11")
K Min. Ground Clearance	500 mm (1'8")
L Track Shoe Width	700 mm (23.6")

BOOM DIMENSIONS

Boom	6,200 mm (20'4")
Length	6,420 mm (21'1")
Height	1,788 mm (5'10")
Width	942 mm (3'1")
Weight	2,740 kg (6,041 lbs)

Cylinder, piping and pin included.
Boom cylinder pin excluded.

ARM DIMENSIONS

Arm	3,050 mm (10')
Length	4,222 mm (13'10")
Height	1,046 mm (3'5")
Width	542 mm (1'9")
Weight	1,700 kg (3,748 lbs)

Cylinder, linkage and pin included.

MACHINE WEIGHTS AND GROUND PRESSURE

Shoe width	Operating weight	Ground pressure	Overall width
	6.2 m (20'4") boom, 3.05 m (10') arm, 1.4 m ³ (1.83 yd ³) bucket, 6,700 kg (14,771 lbs) counterweight		
700 mm (28")	33,900 kg (74,737 lbs)	63 kPa (9.1 psi)	3,290 mm (10'10")

LIFTING CAPACITY

Lifting capacity at the arm end without bucket.
For lifting capacity including bucket, weight of the bucket or the bucket with quick coupler must be deducted from the lifting capacities.
Lifting capacities are based on the machine standing on a firm, uniform supporting surface.



Rating over - front (Cf) Rating over - side (Cs)

- Do not attempt to lift or hold any load that is greater than these rated values at their specified load radius and height. Weight of all accessories must be deducted from the above lifting capacities.
- The rated loads are in compliance with ISO 10567 Hydraulic Excavator Lift Capacity Rating Standard. They do not exceed 87% of hydraulic lifting capacity or 75% tipping load.
- Ratings at bucket lift hook.
- Lifting capacities are based on machine standing on level, firm and uniform ground.
- *Indicates the load is limited by hydraulic capacity rather than tipping capacity.
- Operator should be fully acquainted with the Operator's and Maintenance Instructions before operating this machine and rules for the safe operation of equipment should be adhered to at all times.

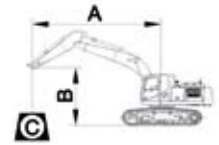
LIFTING CAPACITY (METRIC)

933E with 700 mm shoes, 3,050 mm arm

Conditions

- A: Load radius
- B: Load point height
- C: Lifting capacity rating
- Cf: Rating loads over front
- Cs: Rating loads over side

- Boom length: 6,200 mm
- Arm length: 3,050 mm
- Bucket: None
- Counterweight: 6,700 kg
- Shoes: 700 mm triple grouser
- Unit: kg



A (Unit: m)

B (m)	A (Unit: m)												A (m)
	3.0		4.5		6.0		7.5		9.0		MAX REACH		
6.0													8.1
4.5			*8,770	*8,770	*7,320	*7,320	*6,630	*6,630			*6,246	*6,246	8.7
3.0			*11,370	*11,370	*8,550	*8,550	*7,240	10,440	*6,239	5,643	*6,239	5,726	9.0
1.5			*13,440	13,980	*9,690	9,635	*7,870	7,132	*6,878	5,607	*6,878	5,638	9.0
GROUND			*14,340	13,660	*10,450	9,356	*8,330	7,096			*7,152	6,019	8.8
-1.5	*20,530	*20,530	*14,300	13,628	*10,650	9,227	*8,420	7,016			*7,479	6,231	8.3
-3.0	*18,790	*18,790	*13,460	13,787	*10,180	9,358	*7,660	7,122			*7,760	7,018	7.5
-4.5	*15,700	*15,700	*11,500	*11,500	*8,440	*8,440					*8,022	*8,022	6.2

Lifting capacity at the arm end without bucket.
For lifting capacity including bucket, weight of the bucket or the bucket with quick coupler must be deducted from the lifting capacities.
Lifting capacities are based on the machine standing on a firm, uniform supporting surface.



Rating over - front (Cf) Rating over - side (Cs)

- Do not attempt to lift or hold any load that is greater than these rated values at their specified load radius and height. Weight of all accessories must be deducted from the above lifting capacities.
- The rated loads are in compliance with ISO 10567 Hydraulic Excavator Lift Capacity Rating Standard. They do not exceed 87% of hydraulic lifting capacity or 75% tipping load.
- Ratings at bucket lift hook.
- Lifting capacities are based on machine standing on level, firm and uniform ground.
- *Indicates the load is limited by hydraulic capacity rather than tipping capacity.
- Operator should be fully acquainted with the Operator's and Maintenance Instructions before operating this machine and rules for the safe operation of equipment should be adhered to at all times.

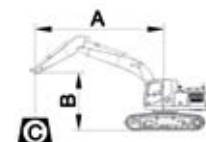
LIFTING CAPACITY (IMPERIAL)

933E with 2.3 ft shoes, 10.0 ft arm

Conditions

- A: Load radius
- B: Load point height
- C: Lifting capacity rating
- Cf: Rating loads over front
- Cs: Rating loads over side

Boom length: 20.3 ft
Arm length: 10.0 ft
Bucket: None
Counterweight: 14,771 lbs
Shoes: 2.3 ft triple grouser
Unit: lb



A (Unit: ft)

B (ft)	A (Unit: ft)												A (m)
	10		15		20		25		30		MAX REACH		
20													26.6
15			*19,335	19,335	*16,138	*16,138	*14,617	*14,617			*13,455	13,234	28.5
10			*25,067	25,067	*18,850	*18,850	*15,961	23,016	*13,755	12,440	*13,755	12,636	29.5
5			*29,630	30,820	*21,363	21,241	*17,350	15,732	*15,163	12,361	*15,163	12,407	29.5
GROUND			*31,614	30,115	*23,038	21,287	*18,364	15,644			*15,767	13,269	28.9
-5	*56,261	*56,261	*31,526	30,044	*23,479	20,342	*18,563	15,467			*16,488	13,737	27.2
-10	*41,425	*41,425	*29,674	30,395	*22,443	20,630	*17,108	15,701			*17,108	15,472	24.6
-15	*34,613	*34,613	*25,353	*25,353	*18,607	*18,607					*17,685	*17,685	20.3

SPECIFICATIONS

Operating weight 38,500 kg (84,878 lbs)

Operating weight includes coolant, lubricants, full fuel tank, cab, standard shoes, boom, arm, bucket and operator 75 kg (165 lbs).

Bucket capacity 1.6 m³ (2.09 yd³)

ENGINE

Description

Cummins EU Stage V, 6-cylinder straight Variable-Geometry Turbocharger (VGT), high pressure common rail, electronically controlled direct injection.

Air cleaner: Cummins direct flow air filter.

Cooling system: Charge air cooler.

Emission rating EU Stage V

Engine manufacturer Cummins

Engine model L9

Aspiration Variable-Geometry Turbocharger (VGT)

Charged air cooling Aftercooler

Cooling fan drive Viscous clutch

Displacement 8.9 L (2.35 gal)
8,900 cm³ (543 in³)

Rated speed 2,100 rpm

Engine output - net (SAE J1349 / ISO 9249) 219 kW (294 hp/298 ps)

Engine output - gross (SAE J1995 / ISO 14396) 231 kW (310 hp/314 ps)

Maximum torque 1,526 N·m (1,126 lbf·ft) @1,400 rpm

Bore × Stroke 114 × 145 mm (4.5" × 5.7")

UNDERCARRIAGE

Track shoe each side 48

Link pitch 216 mm (8.5")

Shoe width, triple grouser 700 mm (28")

Bottom rollers each side 9

Top rollers each side 2

SWING SYSTEM

Description

Planetary gear reduction driven by high torque axial piston motor, with oil disk brake. Swing parking brake resets within five seconds after swing pilot controls return to neutral.

Swing speed 10 rpm

Swing torque 111,000 N·m (81,132 lbf·ft)

HYDRAULIC SYSTEM

Main pump

Type Two variable displacement piston pumps

Maximum flow 2 × 300 L/min (2 × 79.3 gal/min)

Pilot pump

Type Gear pump

Maximum flow 19 L/min (5 gal/min)

Relief valve setting

Implement 34.3/37.3 MPa (4,975 / 5,410 psi)

Travel circuit 34.3 MPa (4,975 psi)

Slew circuit 26.2 MPa (3,800 psi)

Pilot circuit 3.9 MPa (566 psi)

Hydraulic cylinders

Boom Cylinder – Bore × Stroke $\Phi 140 \times 1,505$ mm ($\Phi 5.5" \times 4'11"$)

Stick Cylinder – Bore × Stroke $\Phi 170 \times 1,785$ mm ($\Phi 6.7" \times 5'10"$)

Bucket Cylinder – Bore × Stroke $\Phi 145 \times 1,220$ mm ($\Phi 5.7" \times 4'$)

ELECTRIC SYSTEM

System Voltage 24 V

Batteries 2 × 12 V

Alternator 24 V - 70 A

Start motor 24 V - 7.8 kW (24 V - 10.5 hp)

SERVICE CAPACITIES

Fuel tank 620 L (163.8 gal)

Engine oil 30 L (7.9 gal)

Final drive (each) 9.5 L (2.5 gal)

Swing drive 10.5 L (2.8 gal)

Cooling system 37 L (9.8 gal)

Hydraulic reservoir 240 L (63.4 gal)

Hydraulic system total 450 L (118.9 gal)

DEF tank 35 L (9.2 gal)

SOUND PERFORMANCE

Interior Sound Power Level (ISO 6396) 75 dB(A)

Exterior Sound Power Level (ISO 6395) 105 dB(A)

DRIVE AND BRAKES

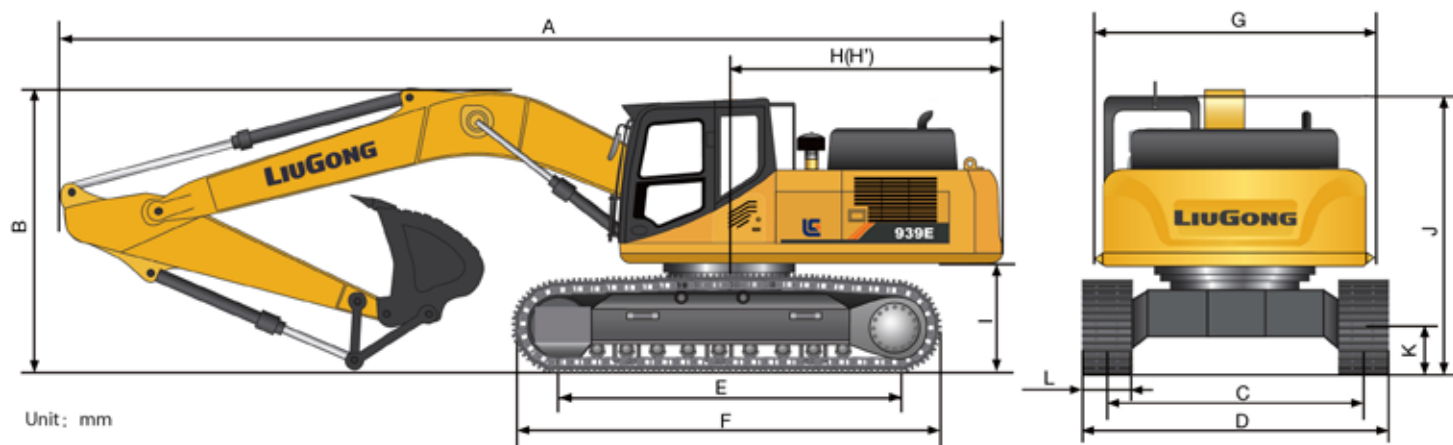
Description

2-speed axial piston motors with oil disk brakes. Steering controlled by two hand levers with pedals.

Max. travel speed High: 5.5 km/h (3.4 mph)
Low: 3.4 km/h (2.1 mph)

Gradeability 35°

Max. drawbar pull 320 kN (71,939 lbf)



Unit: mm

DIMENSIONS

Boom	6,400 mm (21')
Arm Options	3,200 mm (10'6")
A Shipping Length	11,167 mm (36'8")
B Shipping Height – Top of Boom	3,530 mm (11'7")
C Track Gauge	2,590 mm (8'6")
D Undercarriage Width – with 700 mm (28") Shoes	3,290 mm (10'10")
E Length to Center of Rollers	4,050 mm (13'3")
F Track Length	4,944 mm (16'3")
G Overall Width of Upper Structure (including protective side beam)	3,227 mm (10'7")
H Tail Swing Radius	3,500 mm (11'6")
I Counterweight Ground Clearance	1,172 mm (3'10")
J Overall Height of Cab (with protective equipment)	3,318 mm (10'11")
K Min. Ground Clearance	532 mm (1'9")
L Track Shoe Width	700 mm (28")

BOOM DIMENSIONS

Boom	6,400 mm (21')
Length	6,692 mm (21'11")
Height	1,980 mm (6'6")
Width	813 mm (2'8") with boom hinge pin 1,025 mm (3'4")
Weight	3,250 kg (7,165 lbs)

Cylinder, piping and pin included.
Boom cylinder pin excluded.

ARM DIMENSIONS

Arm	3,200 mm (10'6")
Length	4,376 mm (14'4")
Height	1,055 mm (3'6")
Width	652 mm (2'2") (with hinge pin)
Weight	1,880 kg (4,145 lbs)

Cylinder, linkage and pin included.

MACHINE WEIGHTS AND GROUND PRESSURE

Shoe width	Operating weight	Ground pressure	Overall width
	6.4 m (21') boom, 3.2 m (10'6") arm, 1.6 m ³ (2.1 yd ³) bucket, 7,700 kg (16,975 lbs) counterweight		
700 mm (28")	38,700 kg (85,319 lbs)	61.9 kPa (9.0 psi)	3,290 mm (10'10")

LIFTING CAPACITY

Lifting capacity at the arm end without bucket.
For lifting capacity including bucket, weight of the bucket or the bucket with quick coupler must be deducted from the lifting capacities.
Lifting capacities are based on the machine standing on a firm, uniform supporting surface.



Rating over - front (Cf) Rating over - side (Cs)

- Do not attempt to lift or hold any load that is greater than these rated values at their specified load radius and height. Weight of all accessories must be deducted from the above lifting capacities.
- The rated loads are in compliance with ISO 10567 Hydraulic Excavator Lift Capacity Rating Standard. They do not exceed 87% of hydraulic lifting capacity or 75% tipping load.
- Ratings at bucket lift hook.
- Lifting capacities are based on machine standing on level, firm and uniform ground.
- *Indicates the load is limited by hydraulic capacity rather than tipping capacity.
- Operator should be fully acquainted with the Operator's and Maintenance Instructions before operating this machine and rules for the safe operation of equipment should be adhered to at all times.

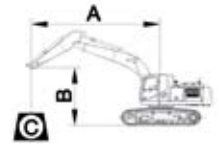
LIFTING CAPACITY (METRIC)

939E with 700 mm shoes, 3,200 mm arm

Conditions

- A: Load radius
- B: Load point height
- C: Lifting capacity rating
- Cf: Rating loads over front
- Cs: Rating loads over side

- Boom length: 6,400 mm
- Arm length: 3,200 mm
- Bucket: None
- Counterweight: 7,700 kg
- Shoes: 700 mm triple grouser
- Unit: kg



B (m)	A (Unit: m)										MAX REACH	A (m)			
	3.0		4.5		6.0		7.5		9.0						
6.0															
4.5					*9,650	*9,650	*8,460	7,050					*7,828	6,302	8.2
3.0			*14,920	13,690	*11,050	9,230	*9,170	6,790	*7,860	5,350	8,078	5,165			9.1
1.5			*17,050	12,850	*12,270	8,780	*9,840	6,550	*8,120	5,240	8,316	5,056			9.1
GROUND			*17,690	12,510	*12,590	8,500	*10,250	6,370	*8,410	5,130	8,240	4,986			9.1
-1.5	*23,810	*23,810	*17,230	12,470	*12,940	8,390	*10,200	6,310			*8,787	5,414			8.5
-3.0	*21,130	*21,310	*15,810	12,610	*12,100	8,450	*9,360	6,380			*9,186	6,281			7.6
-4.5	*17,110	*17,110	*13,100	12,940	*9,930	8,700					*9,102	8,028			6.4

Lifting capacity at the arm end without bucket.
For lifting capacity including bucket, weight of the bucket or the bucket with quick coupler must be deducted from the lifting capacities.
Lifting capacities are based on the machine standing on a firm, uniform supporting surface.



Rating over - front (Cf) Rating over - side (Cs)

1. Do not attempt to lift or hold any load that is greater than these rated values at their specified load radius and height. Weight of all accessories must be deducted from the above lifting capacities.
2. The rated loads are in compliance with ISO 10567 Hydraulic Excavator Lift Capacity Rating Standard. They do not exceed 87% of hydraulic lifting capacity or 75% tipping load.
3. Ratings at bucket lift hook.
4. Lifting capacities are based on machine standing on level, firm and uniform ground.
5. *Indicates the load is limited by hydraulic capacity rather than tipping capacity.
6. Operator should be fully acquainted with the Operator's and Maintenance Instructions before operating this machine and rules for the safe operation of equipment should be adhered to at all times.

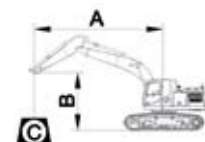
LIFTING CAPACITY (IMPERIAL)

939E with 2.3 ft shoes, 10.5 ft arm

Conditions

- A: Load radius
- B: Load point height
- C: Lifting capacity rating
- Cf: Rating loads over front
- Cs: Rating loads over side

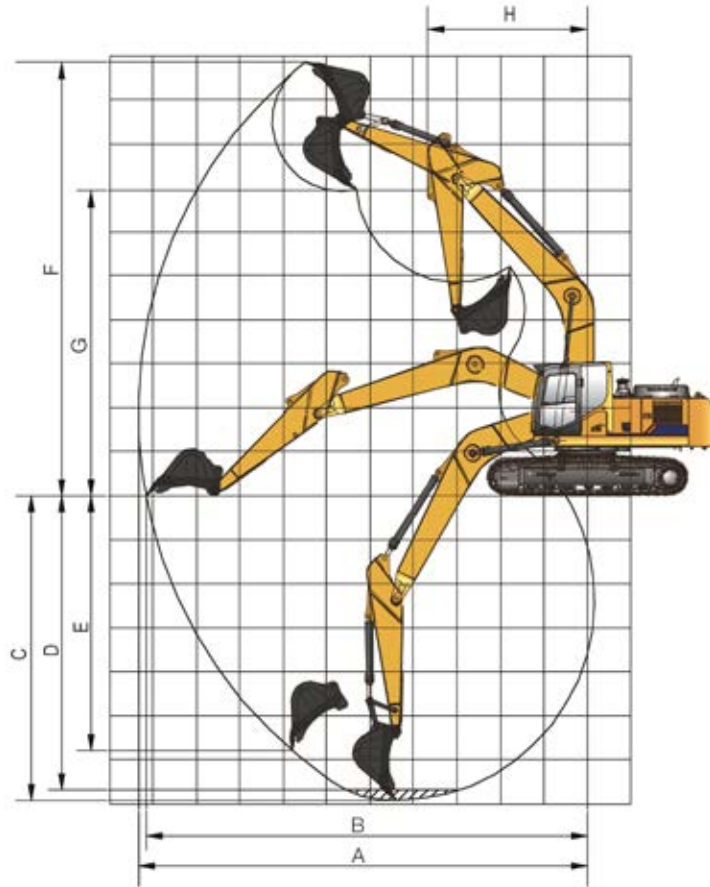
Boom length: 21.0 ft
Arm length: 10.5 ft
Bucket: None
Counterweight: 16,976 lbs
Shoes: 2.3 ft triple grouser
Unit: lb



A (Unit: ft)

B (ft)	A (Unit: ft)												A (m)
	10		15		20		25		30		MAX REACH		
20													
15					*21,275	*21,275	*18,651	15,543			*17,258	13,894	27
10			*32,893	30,181	*24,361	20,349	*20,216	14,969	*17,328	11,795	*17,809	11,387	30
5			*37,589	28,329	*27,051	19,357	*21,693	14,440	*17,902	11,552	18,334	11,147	30
GROUND			*39,000	27,580	*28,550	18,739	*22,597	14,043	*18,541	11,310	18,166	10,992	30
-5	*52,492	*52,492	*37,986	27,492	*28,528	18,497	*22,487	13,911			*19,372	11,936	28
-10	*46,981	*46,981	*34,855	27,800	*26,676	18,629	*20,635	14,065			*20,252	13,847	25
-15	*37,721	*37,721	*28,881	28,528	*21,892	19,180					*20,066	17,699	21

WORK RANGE



WORKING RANGE

		933E	939E
Boom		6,200 mm (20'4")	6,400 mm (21')
Arm		3,050 mm (10')	3,200 mm (10'6")
A. Max. digging reach		10,653 mm (34'11")	11,100 mm (36'5")
B. Max. digging reach on ground		10,453 mm (34'4")	10,900 mm (35'9")
C. Max. digging depth		7,300 mm (23'11")	7,340 mm (24'1")
D. Max. digging depth, 2.44 m (8') level		7,096 mm (23'3")	7,180 mm (23'7")
E. Max. vertical wall digging depth		6,216 mm (20'5")	6,460 mm (21'2")
F. Max. cutting height		10,300 mm (33'10")	10,240 mm (33'7")
G. Max. dumping height		7,265 mm (23'10")	7,160 mm (23'6")
H. Min. front swing radius		4,040 mm (13'3")	4,465 mm (14'8")
Bucket Digging Force (ISO)	Normal	187 kN (42,039 lbf)	232 kN (52,156 lbf)
	Power Boost	203 kN (45,636 lbf)	252 kN (56,652 lbf)
Arm Digging Force (ISO)	Normal	137 kN (30,799 lbf)	170 kN (38,218 lbf)
	Power Boost	149 kN (33,497 lbf)	185 kN (41,590 lbf)
Bucket Capacity		1.4 m ³ (1.83 yd ³)	1.6 m ³ (2.1 yd ³)

STANDARD EQUIPMENT

ENGINE SYSTEM

- Cummins diesel engine, turbocharged, inline 6-cylinder, 4 stroke, water cooled
- Auto-idle speed control
- Air filter with pre-cleaner
- Engine oil filter
- Pre-filter with water separator
- Radiator, oil cooler and intercooler
- IPC (Intelligent Power Control) System
- Engine overheating prevention system
- Electrical fuel refilling pump

DRIVETRAIN

- Hydraulic motor, one-piece two-gear piston and reducer
- 2-speed travel system with automatic shift

SWING SYSTEM

- High-torque piston swing motor with integral spring set and automatic hydraulic release swing brake

HYDRAULIC SYSTEM

- Main pump: two variable displacement piston pumps, ready for PTO
- Pilot pump: gear
- Cylinders: boom, stick, bucket
- Power boost function
- Boom and arm regeneration circuits
- Pilot oil filter

- Load holding valve
- Pilot control shut-off lever
- Hose burst safety valves, prevention of boom or arm supply dropped when the lines split (2 mounted on boom cylinders, 1 on arm cylinder)
- 6-working mode selection system: Power, Economy, Fine, Lifting, Breaker, Attachment

OPERATOR STATION

- Pressurized and sealed cab with all-around visibility, large roof window with slide sliding sun visor, front window wiper and removable lower window
- Skylight rooftop
- Air conditioner, heater, defroster
- Swing parking brake
- AM/FM Radio with MP3 audio jack
- Glass-breaking hammer
- Ashtray, cigarette lighter
- Cup holder
- Floor mat
- Storage box
- Fire extinguisher
- Rear view mirrors
- One key for all locks
- Travel alarm
- Rear view camera 5.7" monitor
- Air suspension seat
- Control joysticks with 2 switch & 1 proportional

INSTRUMENTATION

- Color LCD monitor with alarms, filter/fluid change, fuel rate, water temperature, work mode, fault code, working hour, etc.
- Fuel gauge
- Hydraulic oil level gauge

ELECTRICAL

- Alternator 70 A
- Dual batteries 12 V
- Working lights, 1 frame mounted, 2 boom mounted
- Rotating beacon
- Starting, 24 V

GUARDS

- Belly guards
- Cover plate under travel frame
- Track shields

OTHER STANDARD EQUIPMENT

- Maintenance tool kit
- Maintenance parts package

STANDARD DEMOLITION EQUIPMENT

HYDRAULIC SYSTEM

- Control pattern change valve
- Hydraulic lines:
 - Breaker & shear
 - Slope & rotator
 - Grapple
 - Quick coupler line
- Overloading valve
- Cushion valve

GUARDS

- Cab guard (including cab front and top guard, bar)
- Belly guard and 8 mm thickness platform bottom plate
- Bucket ram guard
- Boxing ring

OPTIONAL EQUIPMENT

HYDRAULIC SYSTEM

- Oil drain line
- Hydraulic quick coupler

OPERATOR STATION

- Power outlet 24 V to 12 V converter
- 4 LED cab top lights
- Working lights on cab (2 on top-front cab)
- Rain visor



Guangxi LiuGong Machinery Co., Ltd.
No. 1 Liutai Road, Liuzhou, Guangxi 545007, PR China
T: +86 772 388 6124 E: overseas@liugong.com
www.liugong.com

Like and follow us:



LG-PB-DEM-933-939E-EU Stage V-28-23062021-ENG

The LiuGong series of logos herein, including but not limited to word marks, device marks, letter of alphabet marks and combination marks, as the registered trademarks of Guangxi LiuGong Group Co., Ltd. are used by Guangxi LiuGong Machinery Co., Ltd. with legal permission, and shall not be used without permission. Specifications and designs are subject to change without notice. Illustrations and pictures may include optional equipment and may not include all standard equipment. Equipment and options varies by regional availability.